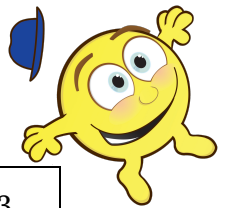


Risk Assessment – Bungee Run

H = Harm, L = Likelihood, RR = Risk Rating

Hazard	Existing Control Measure	Further Control Measure to Reduce Risk	Risk Rating		
			H	L	RR
The area in which the castle is erected	1 meter clearing around the side	Check area for debris that can cause harm	1	2	2
Weather	Inflatables are not used if the weather is too wet. Maximum operating wind speed is 24 mph	Inflatables are anchored using 16mm x 380mm stakes. Staff are trained to anchor them in to the ground with minimum protruding level and correct position.	3	1	2
Damage to equipment	Check equipment before use	Staff are trained to check the inflatables, ensure the zips are fully closed, the equipment isn't damaged and the fan is correctly secured to the tube.	1	1	1
Unnecessary injury to users	Ensure that no-one with a history of back, neck or heart problems uses the inflatable	No acrobatics	4	1	3
Crowd Control / Safety	Adequate barriers and mats in place	When monitoring the inflatables, staff ensure a safe distance is maintained from the inflatable	2	4	3
Participant Collision	Ensure the castle doesn't exceed the maximum number of users	Supervise the castle and maintain control	3	3	3



Trips	Ensure equipment has adequate barriers in place and stakes should not protrude more than 25mm above ground level.	Ensure any electric cables do not cross the public pathways. Mats to be used at entrance and exits.	2	3	3
Injury from sharp Objects / Shoes	Ensure all sharp objects and shoes are removed	Ensure castle is supervised when being used	2	2	2
Boisterous Behaviour	Adult supervision in place. Prevent users from showing boisterous behaviour from using the castle	Prohibit anyone under the influence from using the slide	1	1	1
Choking / Slipping	Ensure no food or drink is taken onto the castle	Do not allow chewing gum and do not use the castle when wet	3	1	2
Harness coming off and hitting someone else	Supervisor should ensure the harness is fitted correctly	The harness and equipment is checked regularly	5	2	4
Cable snapping	A large area should always be left clear in front of the bungee run to protect spectators from users flying forward	Adult supervision should be enforced at all times. The cable is regularly replaced and all equipment is checked annually by the PIPA test.	5	2	4